



# Rambler Cottage Maidenhead



## Rambler Cottage, Bracken Road Maidenhead, Berkshire SL6 3EF

*'A lovely period cottage in a tucked away setting'*

An attractive and very well presented detached period cottage in a quiet residential road on the south westerly outskirts of Maidenhead with nearby shops, good schools and easy access to the M4. The property benefits from delightful mature gardens of a generous size providing potential for extension STPP and has a large gated driveway and detached double garage.

Local schools are highly regarded and transport links are excellent. There is a mainline station into London Paddington (fast train 20 minutes) and the Elizabeth line provides a direct link to the City. Both M4 and M40 are close by with Heathrow airport 30 minutes away.

EPC Rating: D  
Council Tax Band: E

**£695,000 FREEHOLD**



**Pike Smith & Kemp**  
22 Queen Street, Maidenhead  
Berkshire SL7 1HZ



[maidenhead@pikesmithkemp.co.uk](mailto:maidenhead@pikesmithkemp.co.uk)  
01628 621177



## Accommodation summary

### Ground floor

ENTRANCE HALL

SITTING ROOM

DINING ROOM

KITCHEN

UTILITY ROOM

CLOAKROOM

### First floor

PRINCIPAL ROOM

TWO FURTHER BEDROOMS

FAMILY BATHROOM

### Outside

GOOD SIZED MATURE GARDEN

DETACHED DOUBLE GARAGE

LARGE GATED DRIVEWAY

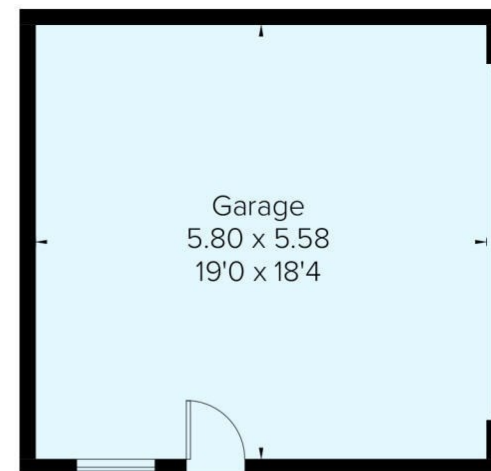




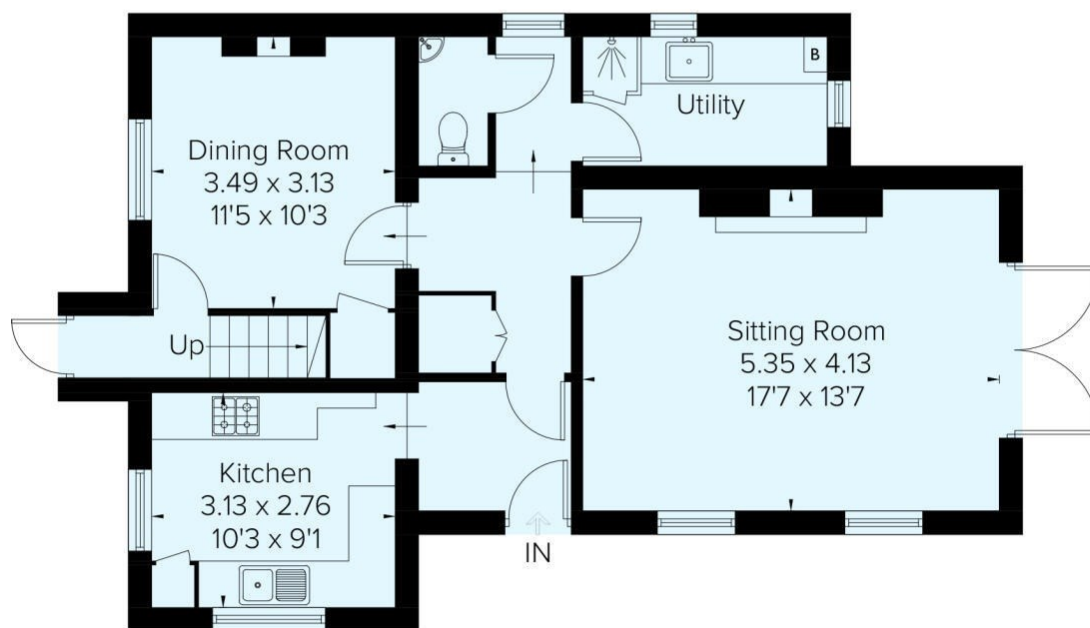




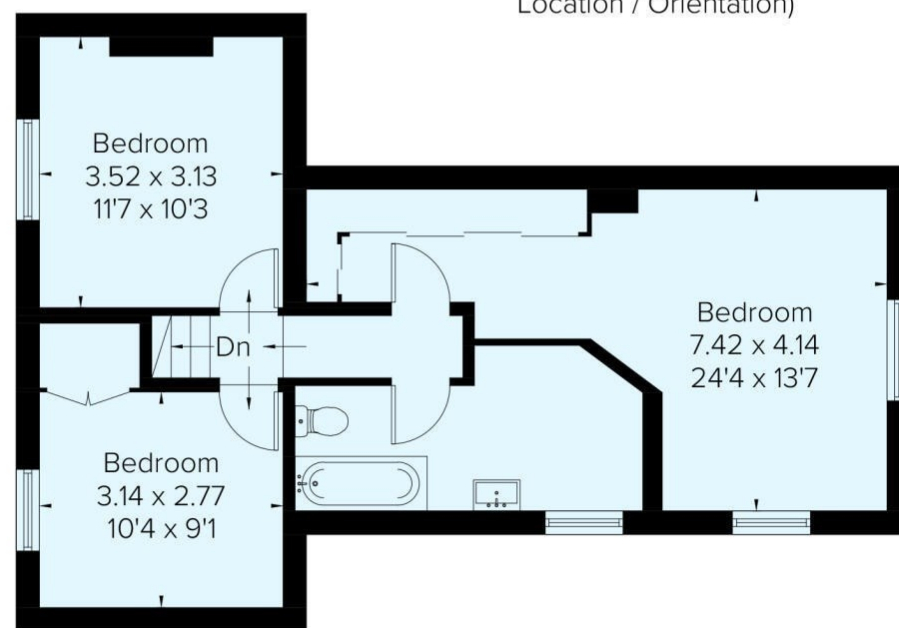
Approximate Area = 122.1 sq m / 1314 sq ft  
Garage = 32.4 sq m / 349 sq ft  
Total = 154.5 sq m / 1663 sq ft



(Not Shown In Actual  
Location / Orientation)



Ground Floor



First Floor













**Pike Smith & Kemp**  
22 Queen Street  
Maidenhead, SL6 1HZ  
[www.pskweb.co.uk](http://www.pskweb.co.uk)  
[maidenhead@pikesmithkemp.co.uk](mailto:maidenhead@pikesmithkemp.co.uk)  
01628 621177

